

## SETUP ROCKET M5 POINT TO POINT

Note : Topology (M5 AP WDS ----- distance ----- M5 STATION WDS)

ROCKET M5 AS AP WDS / 192.168.0.2

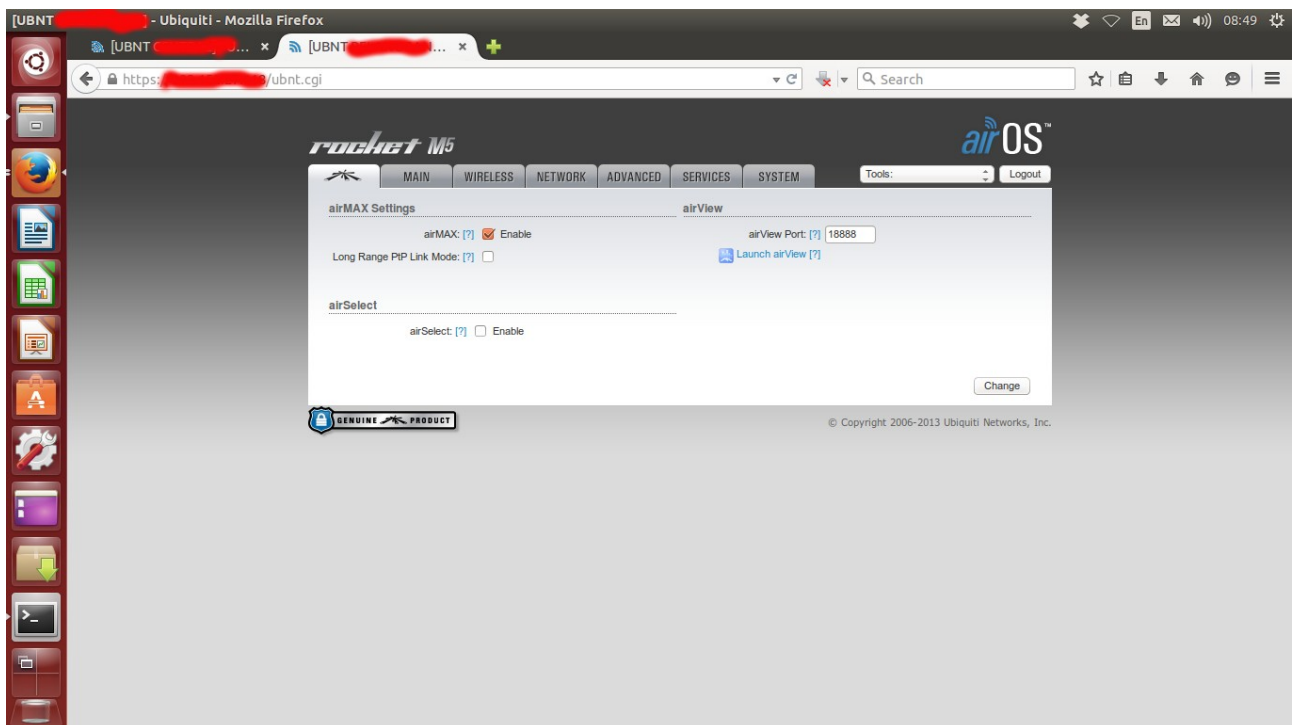
ROCKET M5 AS STATION WDS / 192.168.0.3

Gateway / 192.168.0.1

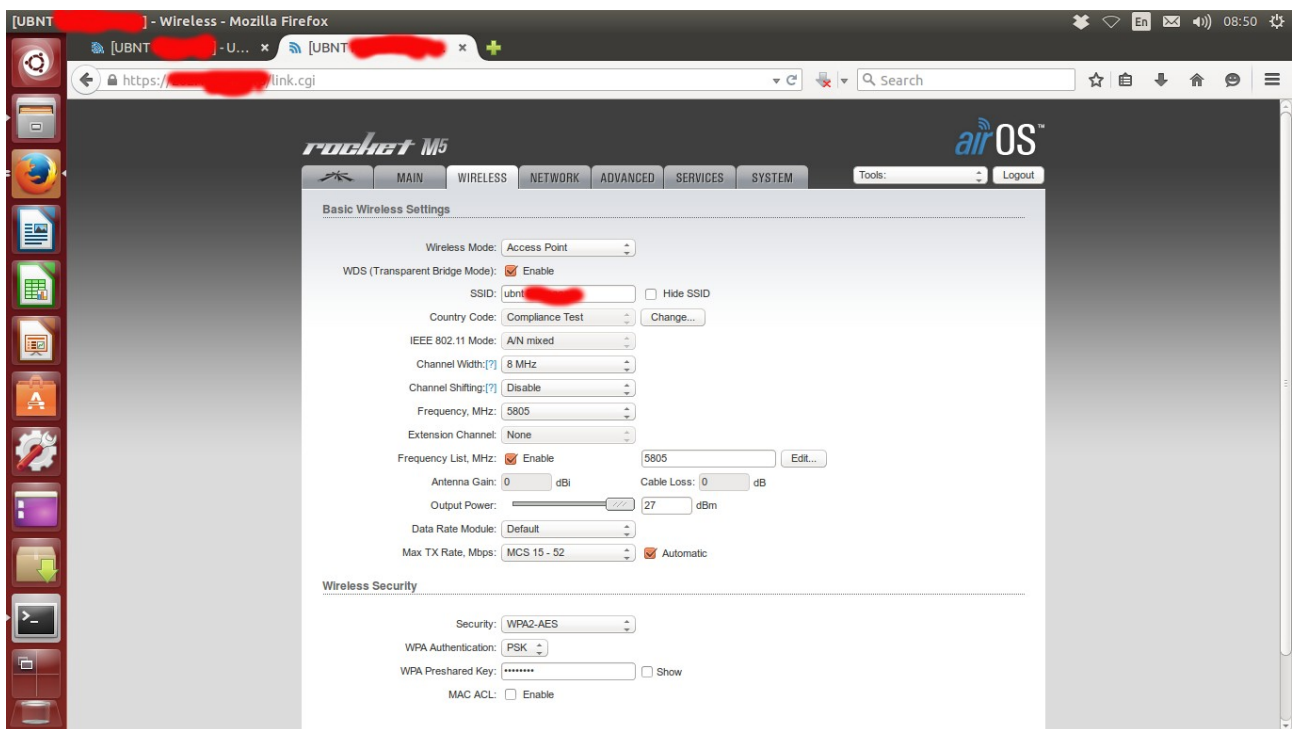
DNS / 8.8.4.4 / 8.8.8.8

### ROCKET M5 AS AP WDS

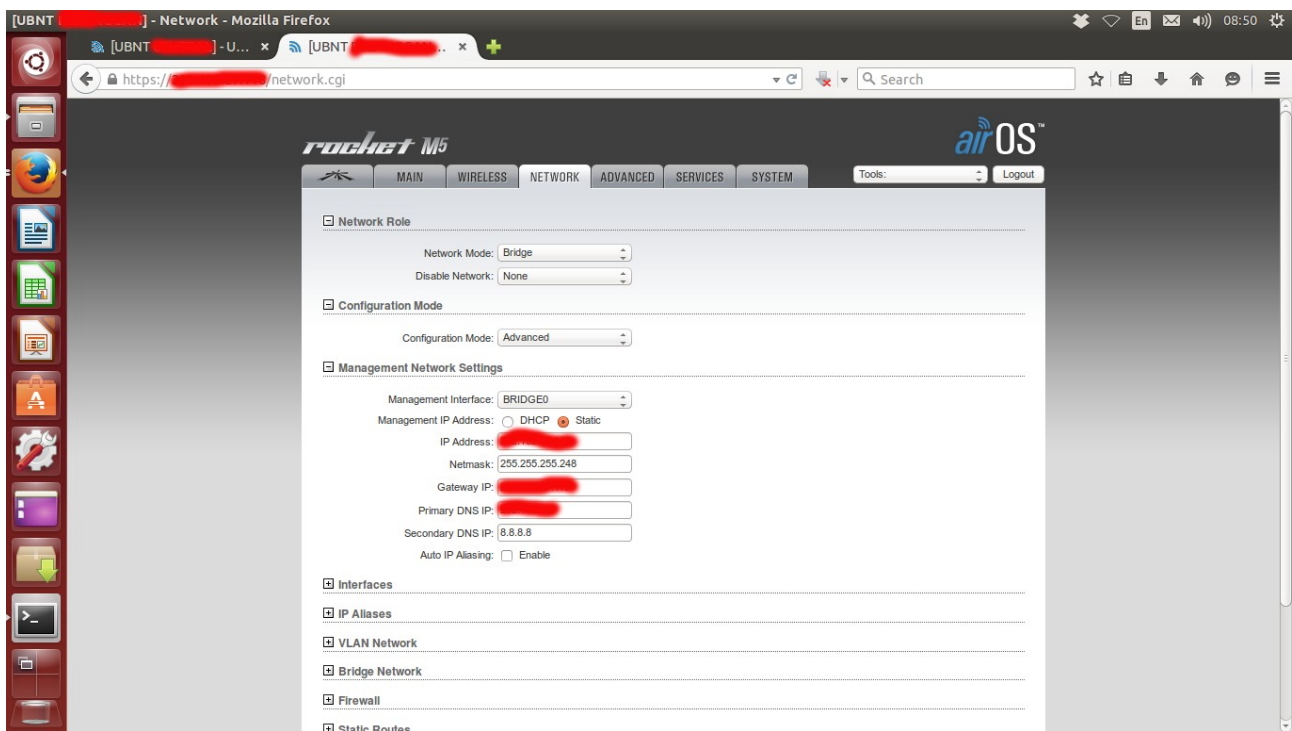
1. set enable air max.



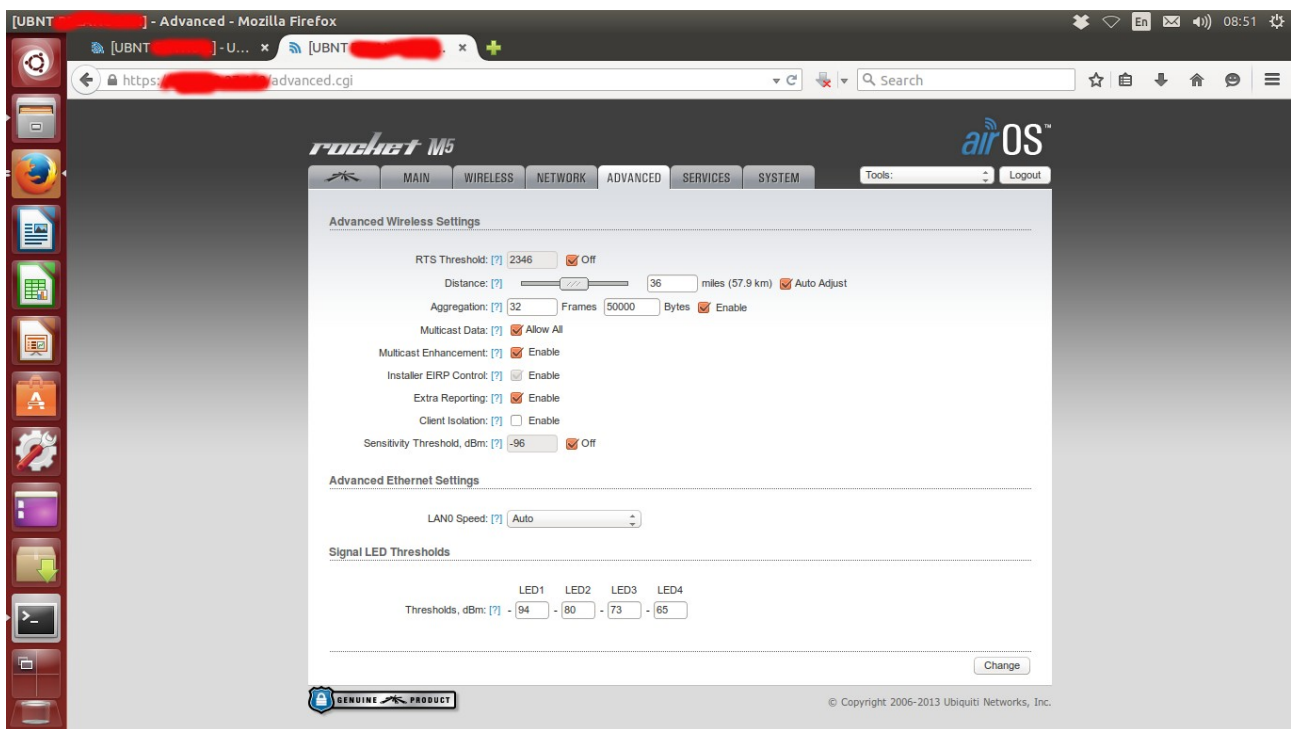
2. set wireless as AP mode, create SSID, key & etc.



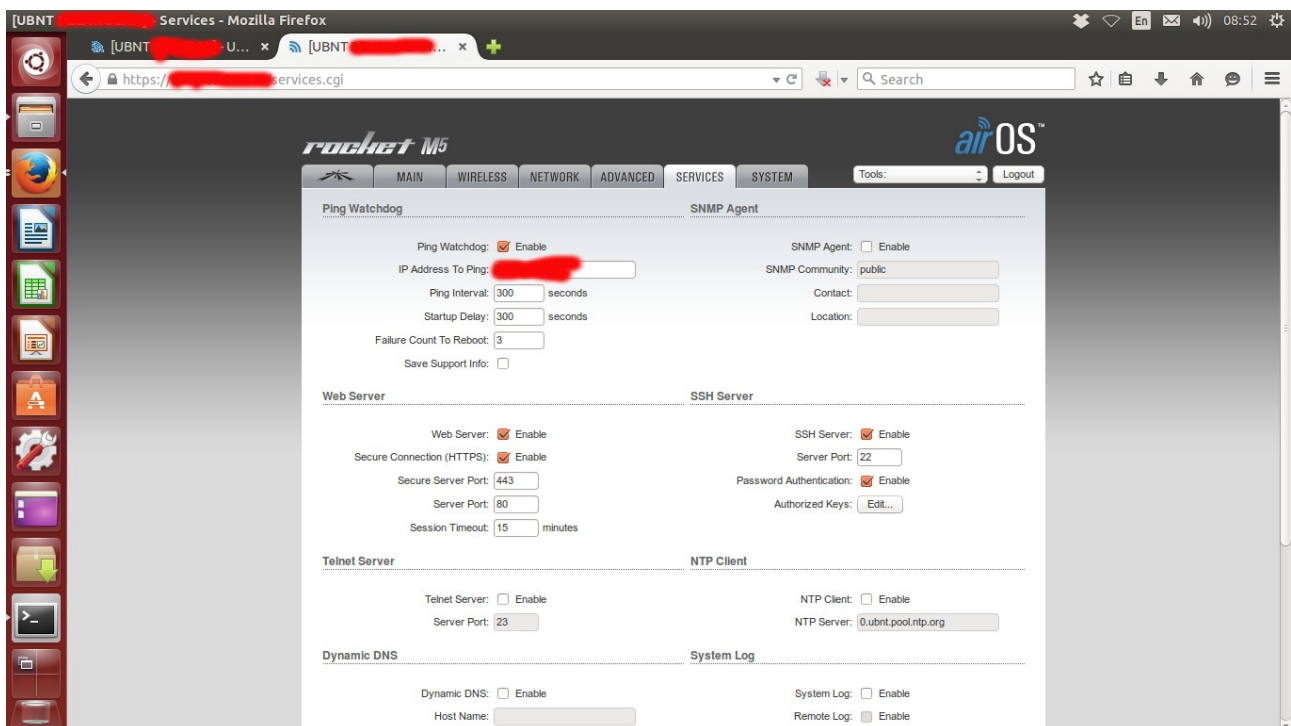
3. set network bridge mode, ip 192.168.0.2, netmask 255.255.255.248, gateway 192.168.0.1, DNS 8.8.4.4 / 8.8.8.8.



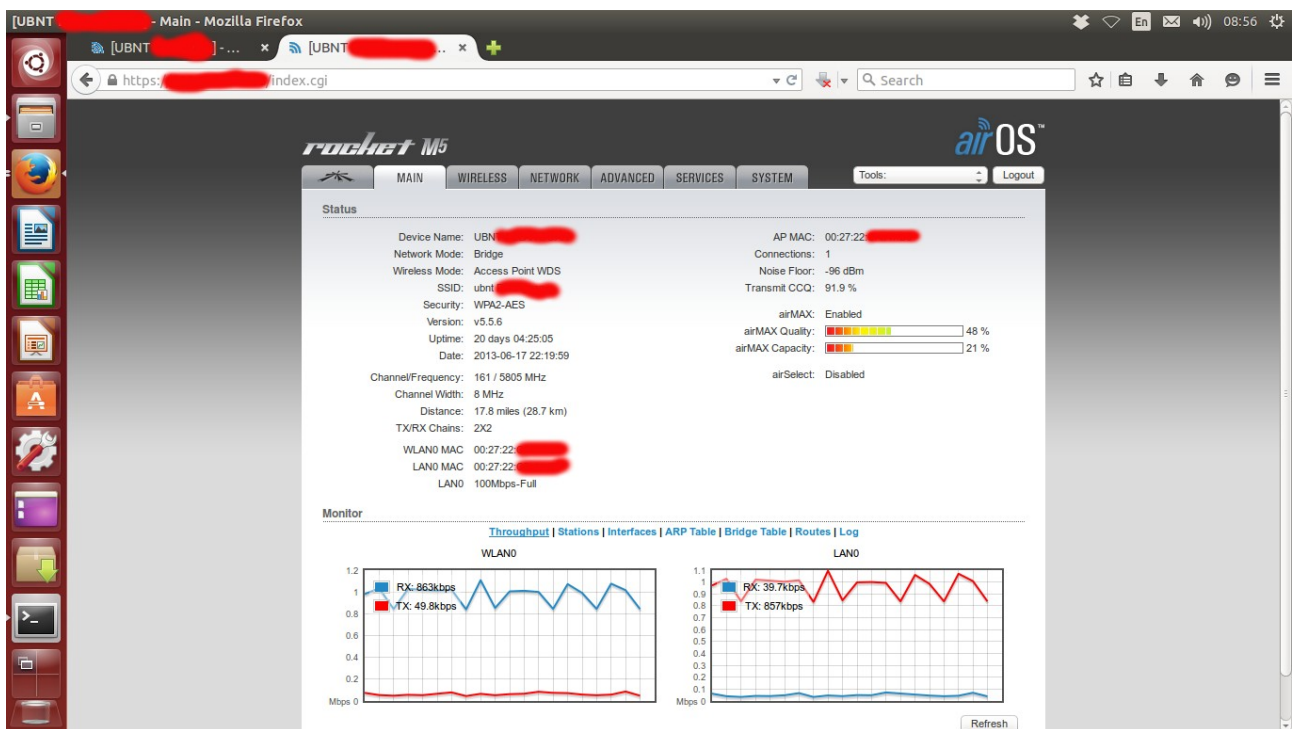
4. set advance depend on your needs.



5. set services, enable ping watchdog to AP Station WDS ip 192.168.0.3, should you disable services that you don't needs.

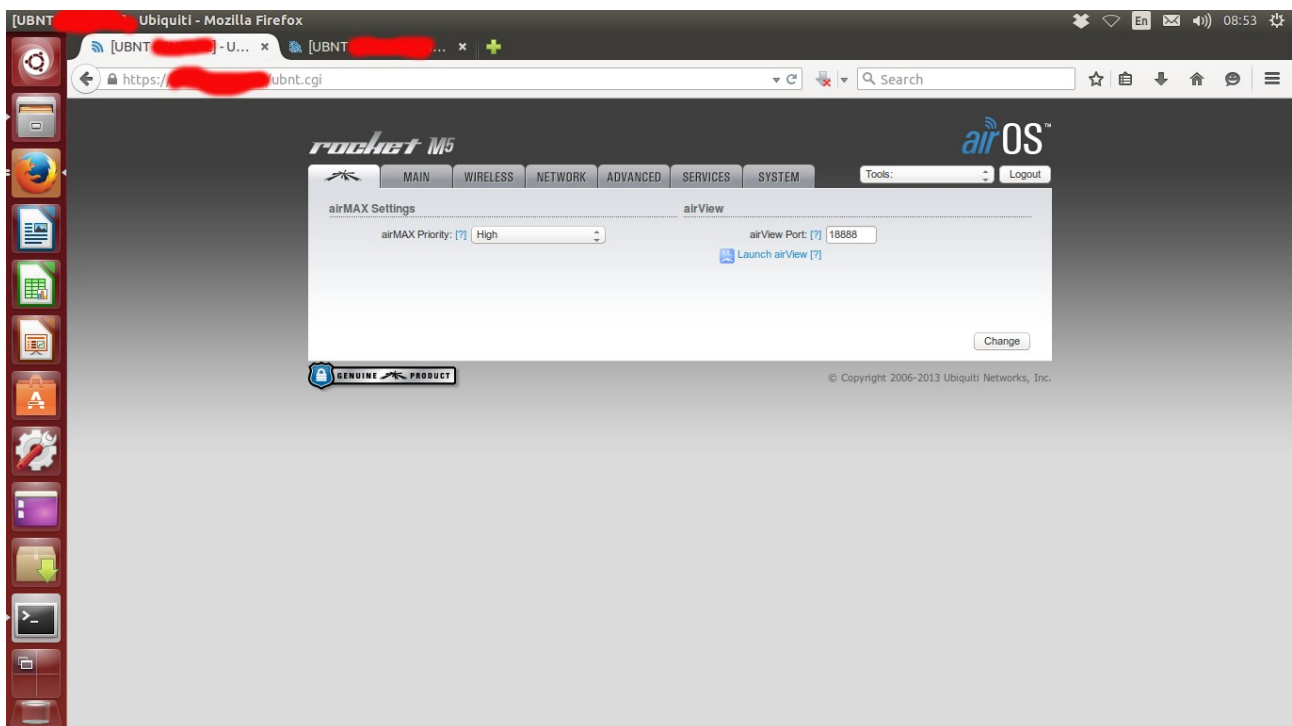


## 6. cek status.



## ROCKET M5 AS STATION WDS

## 7. set air max.



8. set wireless as station mode & select site survey to rocket M5 as Ap mode.

The screenshot shows the rocket M5 airOS web interface. The 'Basic Wireless Settings' section is visible, with 'Wireless Mode' set to 'Station'. A 'Site Survey' window is open, displaying a table of scanned frequencies. The table has columns for MAC Address, SSID, Device Name, Encryption, Signal / Noise, dBm, Frequency, GHz, and Channel. The scanned frequency is 5.805GHz.

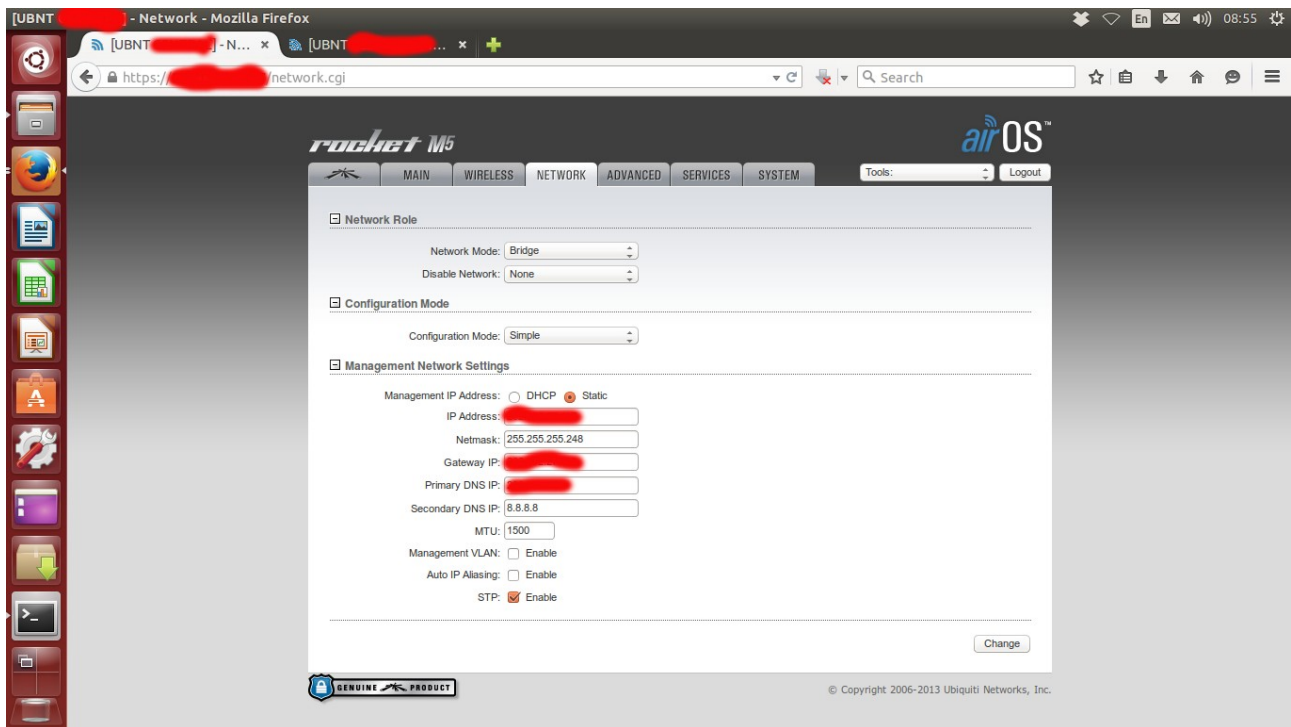
MAC Address	SSID	Device Name	Encryption	Signal / Noise, dBm	Frequency, GHz	Channel
00:27:22:...	ubnt...	UBNT...	WPA2	-88 / -96	5.805	161

Below the table, there is a message: 'Selectable SSID's must be visible and have compatible channel bandwidth and security settings'. Buttons for 'Lock to AP', 'Select', and 'Scan' are at the bottom right of the survey window.

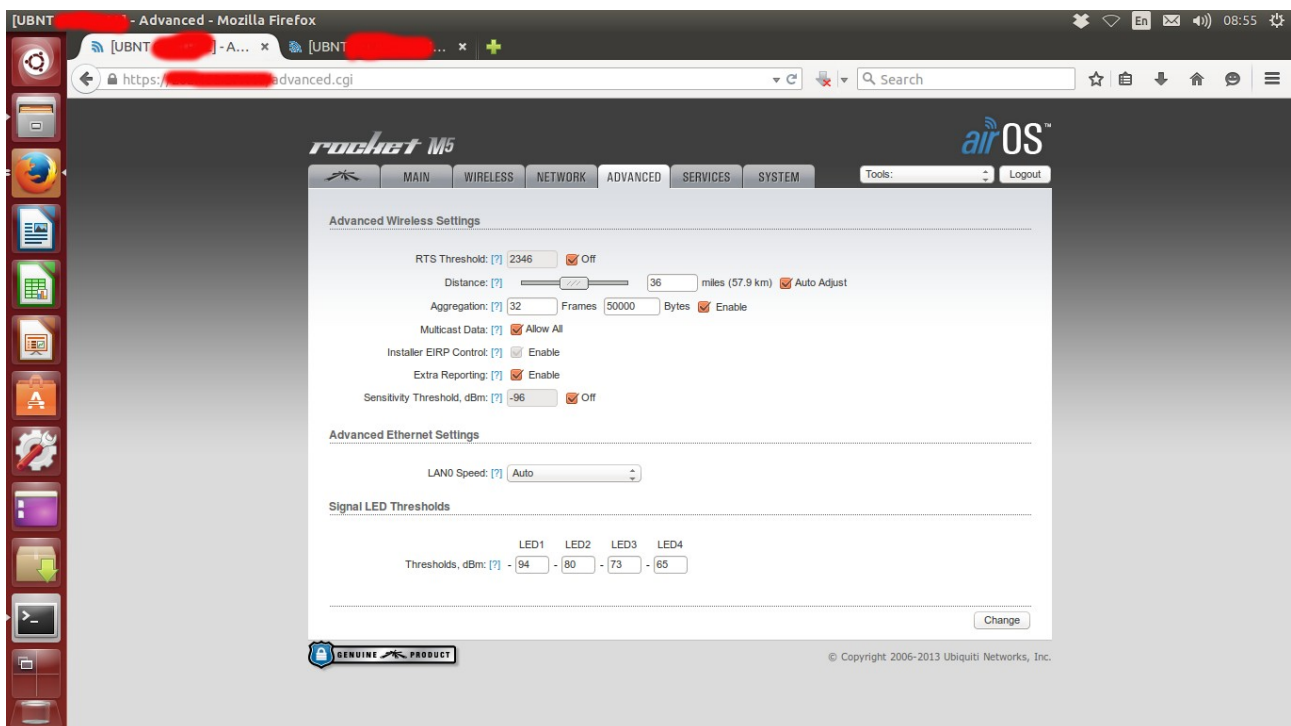
9. set key and ect (key to connect M5 as ap mode).

The screenshot shows the rocket M5 airOS web interface. The 'Basic Wireless Settings' section is visible, with 'Wireless Mode' set to 'Station'. The 'Wireless Security' section is expanded, showing 'Security' set to 'WPA2-AES', 'WPA Authentication' set to 'PSK', and a 'WPA Preshared Key' field. The 'Change' button is at the bottom right.

10. set network bridge, set ip 192.168.0.3, netmask 255.255.255.248, gw 192.168.0.1, DNS 8.8.4.4 / 8.8.8.8.

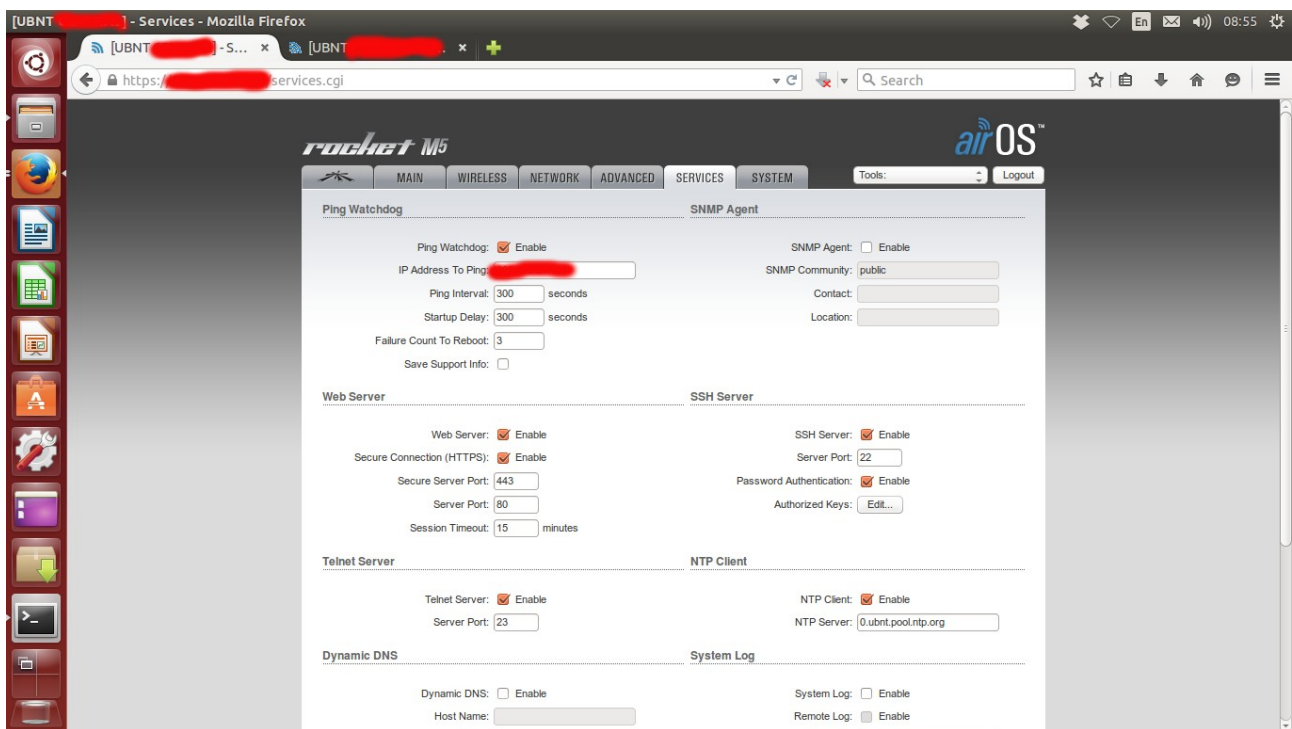


11. set advance.

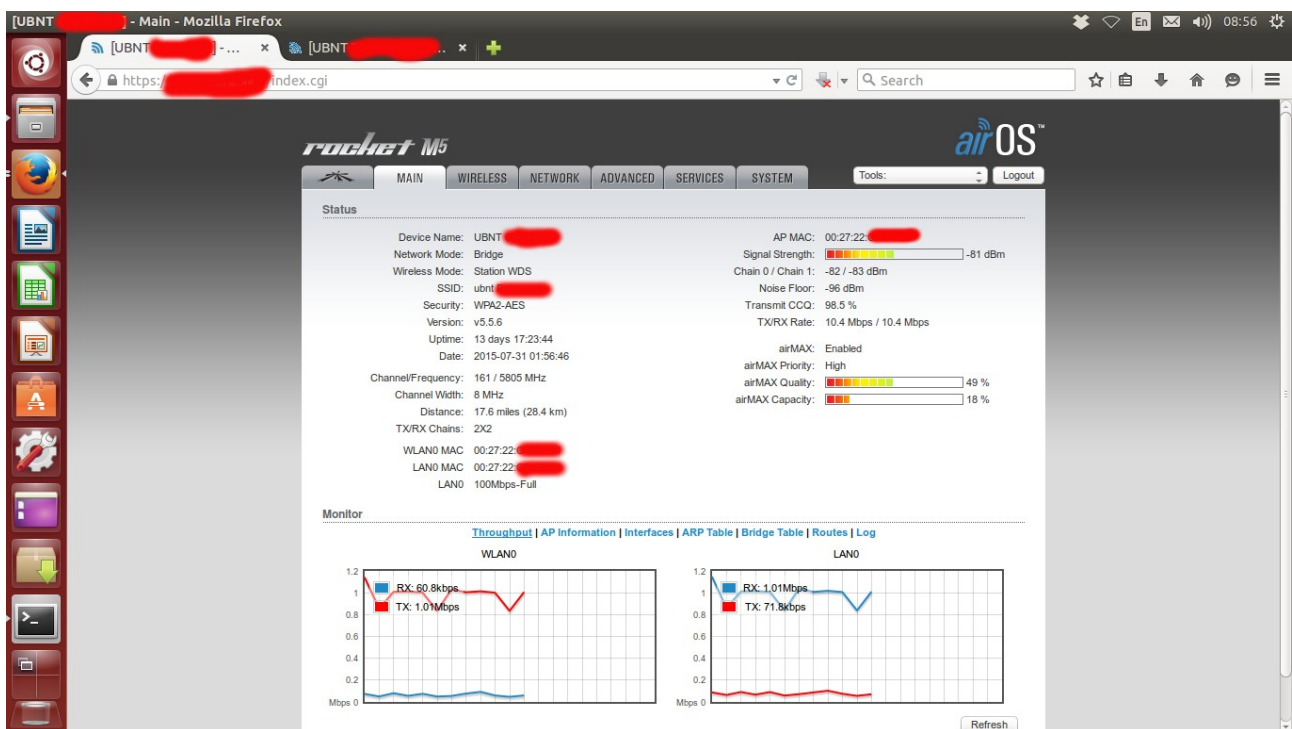




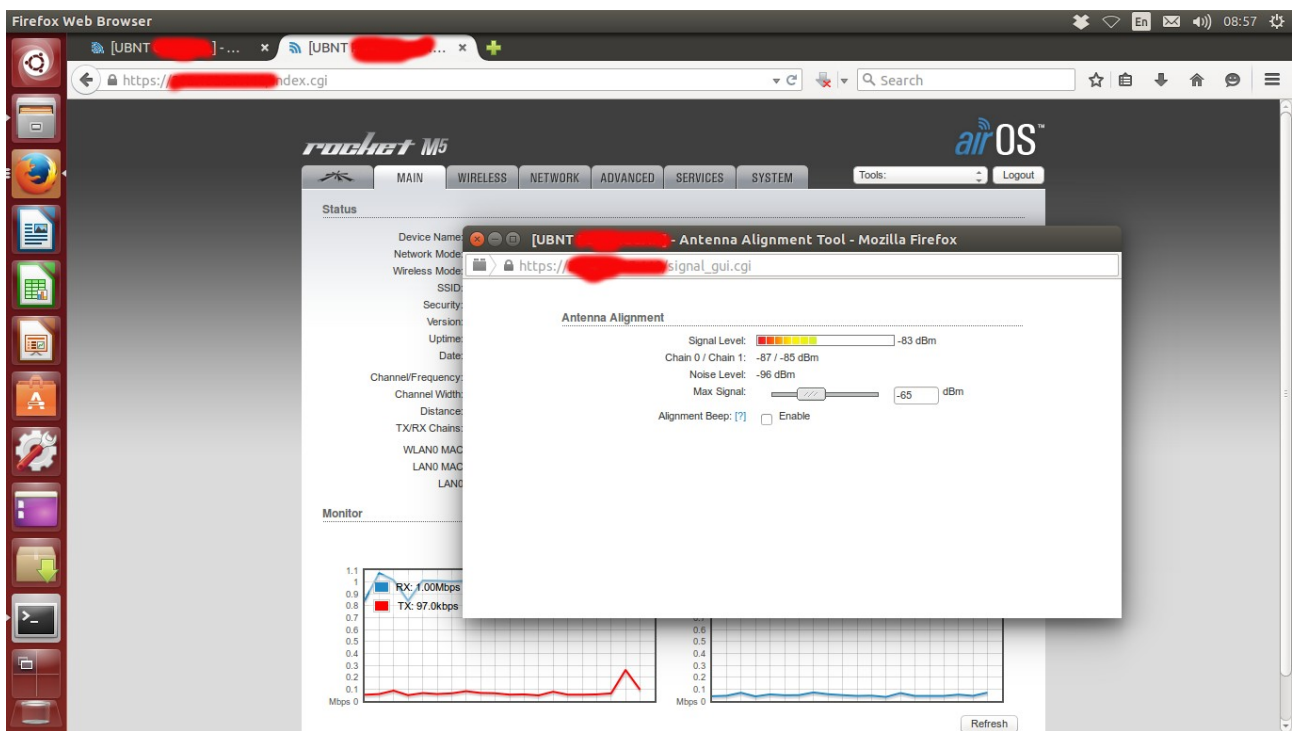
12. set services, ping watchdog to ip 192.168.0.2 M5 ap mode.



13. cek status.



14. fix it if signal poor.



Dok 31/07/2015 padliyulian@ymail.com